

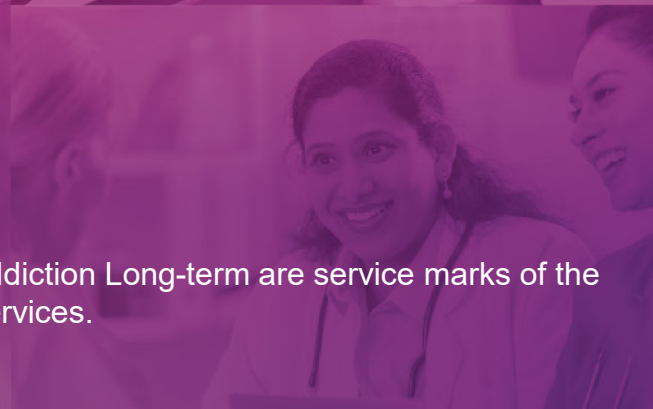


**NIH
HEAL
INITIATIVE**

Community-level approaches to reducing risk for drug use

Sept 9, 2020

Deborah Gorman-Smith, Ph.D.



NIH National Institutes of Health
HEAL Initiative

NIH HEAL Initiative and Helping to End Addiction Long-term are service marks of the U.S. Department of Health and Human Services.

Communities that Care Model (Collective Impact)

Comprehensive and coordinated community-level approach to:

- use data to inform decision-making;
- build capacity;
- enhance community collaboration;
- enhance community social organization (collective efficacy)

Partnership to Develop and Implement a Community Action Plan

- **More than 70 partners at the table**
- **Using data collected by the community:**
 - Student survey (21 schools - 1,707 students in 6th, 8th, 10th, and 12th grades)
 - Neighborhood resident survey (400 residents)
 - Existing administrative data (e.g., crime, housing)
 - Conversations with key community leaders
- **Resource assessment and gap analysis**
- **Community identified targets – addressing long-standing inequities**
- **Implement and evaluate programs**





CHICAGO CENTER *for* YOUTH VIOLENCE PREVENTION

The goal: Reducing violence and strengthening community

Violence prevention

through youth,
family and
community
programs

Mental Health/Trauma

Faith-led support
and counseling

Education

Community
Action Council
(CPS)

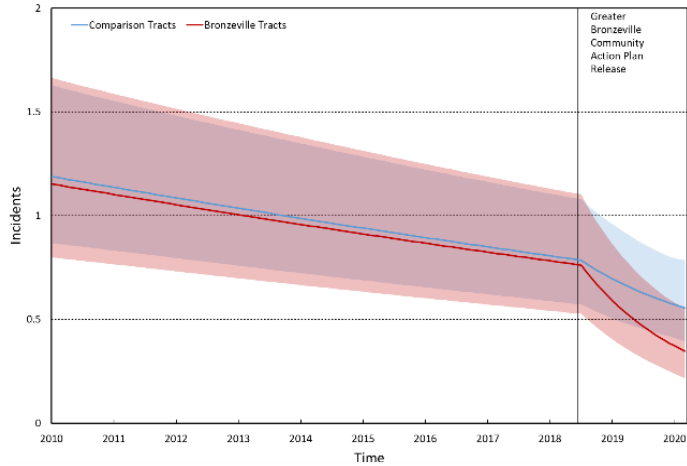
Workforce Development

Employment and
career
opportunities

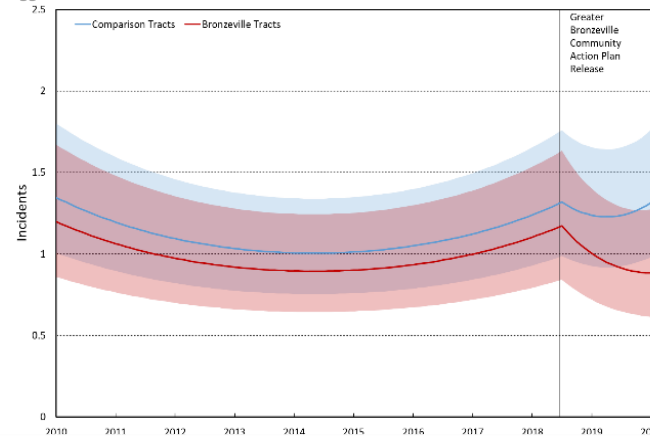
CCYVP provides programming, evaluation, and technical support.

Effect on Community-Level Crime and Violence

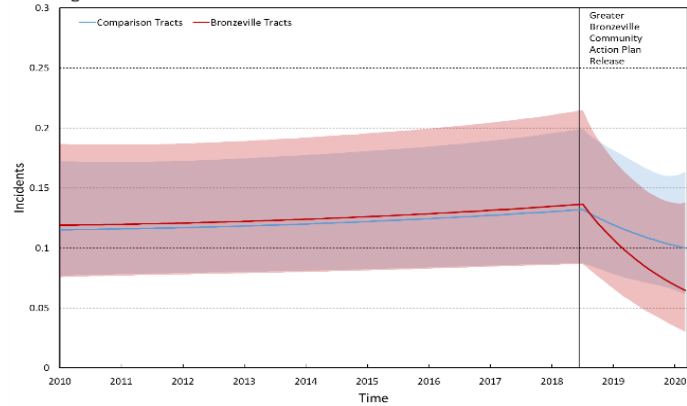
Robberies



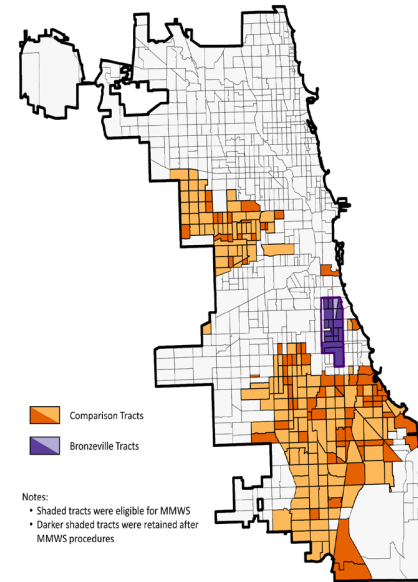
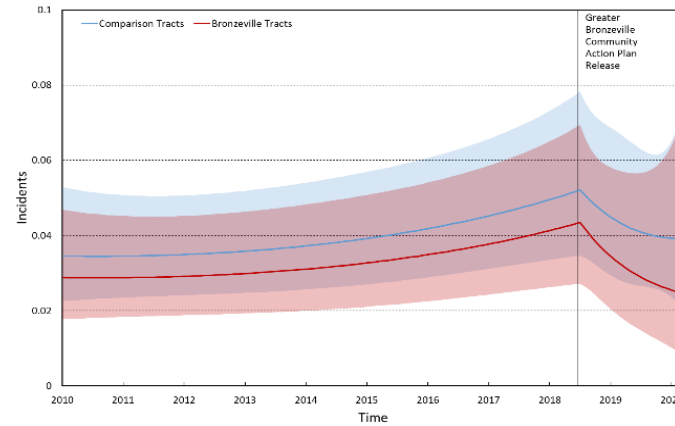
Aggravated Assaults



Shootings



Homicides



Notes:
 • Shaded tracts were eligible for MMWS
 • Darker shaded tracts were retained after MMWS procedures

Challenges

- Urban context (scale, lack of economic investment, structural racism)
- Theory and science around community organizing beyond coalitions
- Cultural sensitivity
- Enormous need related to capacity building
- Value of time
- Evidence-base of programs for communities of color
- Evidence-base of community-level programs